

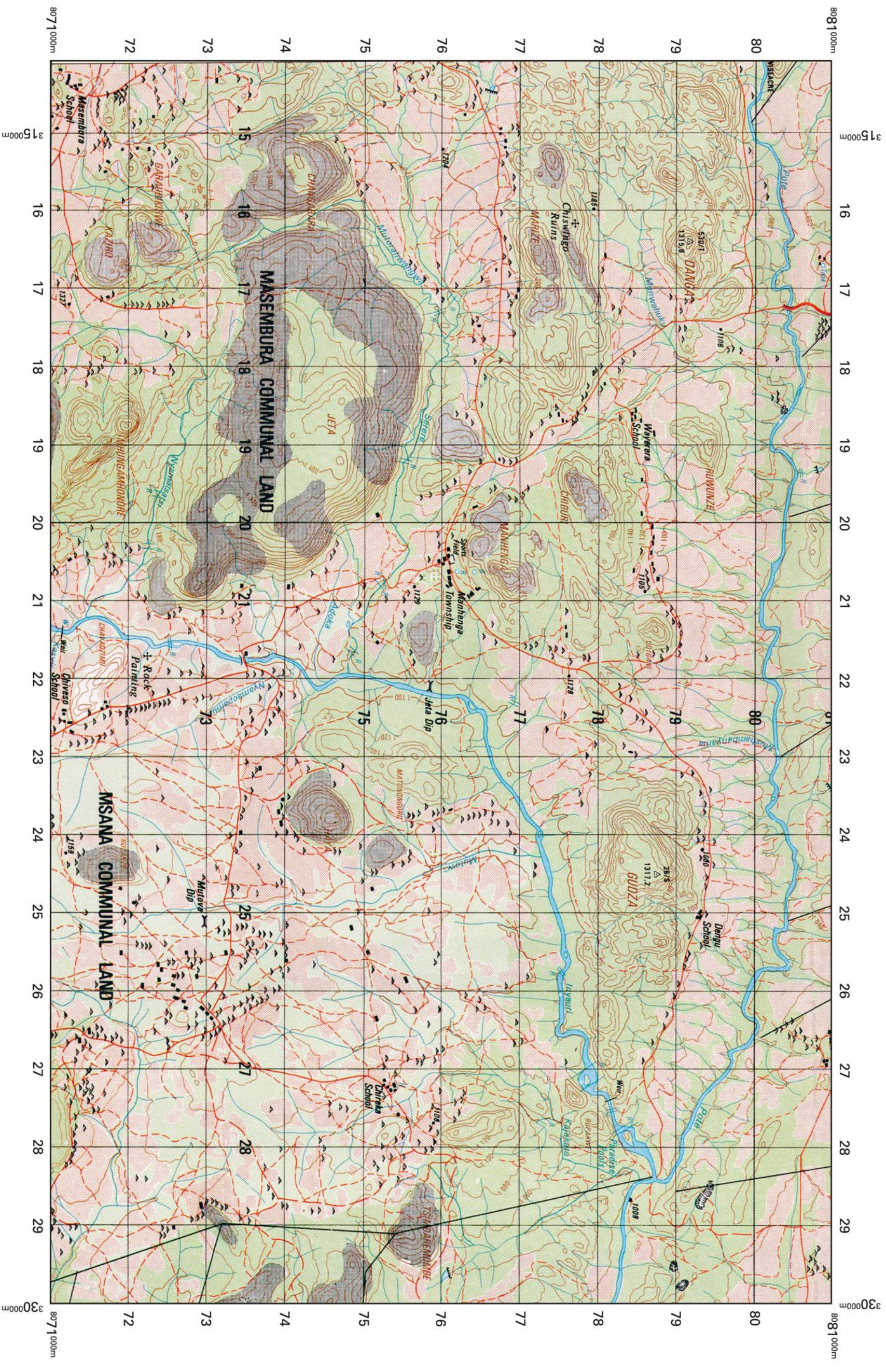
Masembura (Zimbabwe)



1:50 000 Scale

Extract No 90116

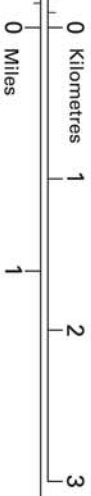
Four colours should appear above; if not then please return to the invigilator.
Four colours should appear above; if not then please return to the invigilator.



Heights are in metres above sea level

Scale 1: 50 000

2 centimetres to 1 kilometre (one grid square)



1 kilometre = 0.6214 mile

1 mile = 1.6093 kilometres

Grid North

HARARE, BINDURA

City, Town **MIBERENGWA** , **FENGA B.C.**

- Boundary, International
- " Cadastrol. Original Grant
- " " Subdivision
- Road, Wide Tarrad
- " " " Narrow Tarrad
- " " Gravel or Earth Bridge
- " " other
- Track, Cut Line or Game Trail
- Aerodrome Landing Area
- Railway, with Embankment, Cutting, Tunnel
- Mast
- Trigonometrical Station and Height in metres to top of pillar
- International Boundary Beacon, Magnetic Station
- Unmarked Spot Height Ground Survey, Photogrammetric
- Power Line, 33kV and above, approximate alignment
- Huts, Staff Quarters
- Built-up Area, Buildings
- Church
- Dip Tank
- Hill name
- Mine Name
- National Monument or Place of Historical Interest
- Police Station, Post Office, Post and Telegraph Agency
- District Administration Office

- River, Watercourse
- Dam
- Lake
- Pan, Small, Large, Waterhole
- Rapid, Waterfall
- Well, Spring, Borehole, Windpump, Reservoir
- Furrow, Pipeline
- Seasonal Marsh
- Contours at 20 metre Vertical Interval, with Cliff Feature
- Depression, Sand
- Isolated Hill Feature that does not take a contour
- Cultivation
- Smooth Rock
- Mining or Prospecting Trench, Mine Dump, Quarry or Excavation
- Very Dense Bush, Dense Bush
- Medium Bush
- Sparse Bush
- Orchard or Plantation

BOUNDARY DIAGRAM REFERENCE

- International
- Administrative District
- Designated Area
- Intensive Conservation Area
- Rural and Road Council Areas



Extract produced by Ordnance Survey 2014.
All rights reserved.

Map and Legend scanned from previously printed copy. Quality will not match mapping printed directly from source data.

Compiled by Stereoplotter from Air Photography dated July 1977. Republished with minor amendments 1987.
Published by the Surveyor-General, Zimbabwe. Copyright reserved by the Government of Zimbabwe.